

www.cs-france.fr

c|ssupertrak[®]

superior cubicle curtain track system

innovative design | flexibility of configuration | rigid and durable | smooth and quiet gliding



SUPERTRAK® CUBICLE CURTAIN TRACK

There is curtain track... and then there is Supertrak!

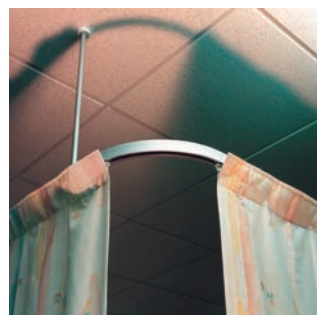
C/S Supertrak® is the most effective cubicle curtain track system currently available, featuring an innovative design which combines a totally rigid structure with the flexibility of configuration to meet individual requirements. It is available in a satin anodised aluminium finish, or can be coated to order in any BS, RAL or custom colour.

The system incorporates a continuous pvc liner running inside the full length of the cubicle track which eliminates joints on the running surface, so allowing the glides to run quietly and without snagging – a feature unique to C/S Supertrak®.

C/S Supertrak® is used in hospitals, health centres, nursing homes, leisure centres and hotels throughout the world. Installations are manufactured to site requirements then shipped in easily handled flat-pack boxes.

Glides and hooks attached to the curtain are loaded through a slot in the track from one position which eliminates the laborious task of hooking and unhooking.

The runner access slot can be positioned at virtually any point of the system including the front so that loading can easily be achieved without disturbing the patient, the curtain subsequently being anchored at the bed head end.



KEY FEATURES

- Flexible configurations satisfy individual requirements.
- Continuous liner eliminates snagging.
- Glides run smoothly and quietly.
- Runner access points enable curtains to be changed easily.
- Anti-ligature components available.
- Available anodised or powder coated in any BS, RAL or custom colour.
- Rigid and durable.
- Conforms to HTM 66 – 2005.
- Modular system – ideal for export.



Worcestershire Royal Hospital (UK): This PFI build project uses Supertrak throughout the hospital.

BED LAYOUTS

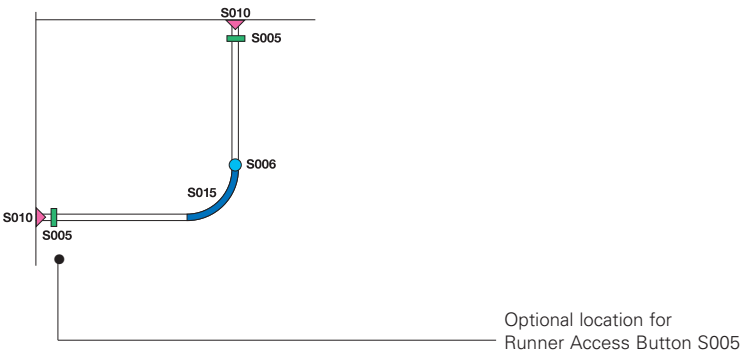
C/S Supertrak® will satisfy every possible configuration. Layouts shown below indicate the possible positions of the components used for various typical bed layouts, they are intended as a guide only.

Note: Part numbers refer to the items shown on the page opposite.

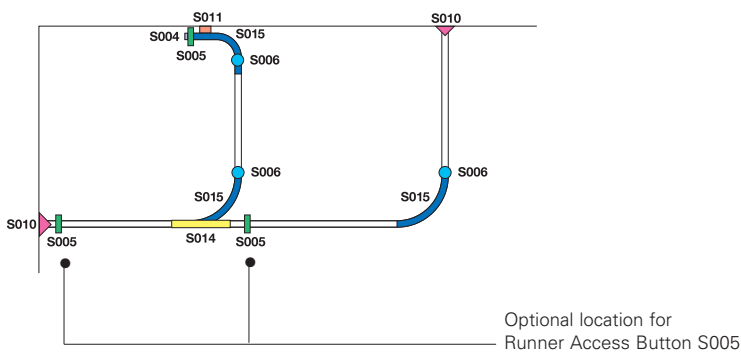


Malmaison Hotel, Manchester

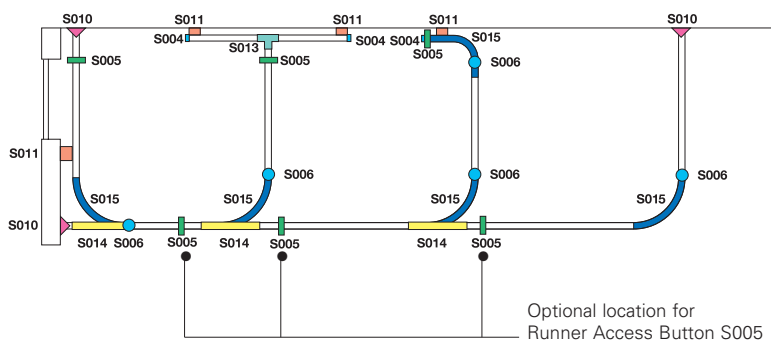
Single bed layout



Two bed layout



Three bed layout



SUPERTRAK® COMPONENTS

FIXING COMPONENTS

Direct Ceiling Fixing

By means of concealed screws located at 1m centres.



Parallel Wall Bracket S011

Used where support is required when the track end returns parallel to a wall. Fixed by two screws.



Wall Bracket S010

Used in a suspended system to fix the track end to the wall at 90°. Also used to create a tie bar providing lateral restraint.

An alternative bracket is available where the angle between wall and track is not 90° (S020).

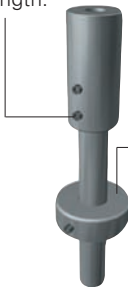


Anti-ligature components available for wall fixing.

Rod Suspender S006

An aluminium rod attached to the track locates at the ceiling in an aluminium sleeve.

Two grub screws retain the rod in the sleeve, allowing 20 mm adjustment in length.



Rod Collar S007

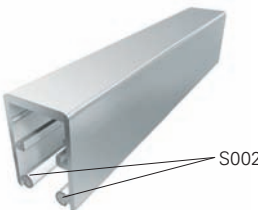
Situated at the rod entry point through the suspended ceiling.

Anti-ligature components available at rod/track interfaces.

Anti-ligature suspension components are available with Supertrak and will securely hold the curtain and the track. When an abnormal load is applied, the anti-ligature component releases its load. This can happen time after time without the decline in performance of the system.

SYSTEM ACCESSORIES

Track length (S001) and liner (S002)



Junction S012

For linking adjacent cubicles where a return is necessary at the front of the track.



Bends S015

Can be cut to achieve various angles to produce assembled cubicles



Overlapping Joint S014

Links adjoining cubicles at front of track.



T Piece S013

Acts as a junction where tracks are joined at 90°



Inner Connecting Piece S018

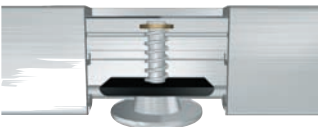
Used to connect longer sections of track.



Runner Access Button S005

A spring loaded button can be located either near the commencement of the track or at the front of the track (optional position) to allow easy access when inserting or removing curtains (as required by HTM 66, 2005).

The Runner Access Button also acts as an anchor at the bed head end to secure the end glide and fix the curtain at the end.



Glide with Hook S003H

Manufactured from self lubricating nylon.

Recommended usage is 10 No. per metre.



End Cap S004

Used to close off track end.





hospitals, medical centres, clinics, sanatoria, elderly residences, leisure centres, ambulatories, hotels, colleges, nursing homes, sport centres, infirmaries, swimming pools, spas, wellness centres, penitentiary institutions, rehabilitation centres, etc.

International sales office



135, rue Isambard
B.P. 66
F-27120 PACY/EURE

Tel.: +33 2 32 67 00 00

Fax: +33 2 32 67 14 12

e-mail: marketing@cs-france.fr

web: www.cs-france.fr

www.csgroup.com

Local sales representation office

architectural solutions worldwide

cisacrovyn®



Wall, corner and door protection

couvraneuf®



Expansion joint cover systems

cispedisystems®



Entrance flooring systems

cisairfoil®



Sun controls

lumisystems®



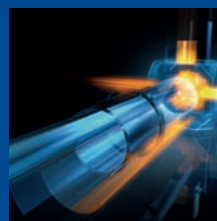
Lighting appliances

wattolene®



Extruded polystyrene sheets

wattohm®



Technical profiles and plastic tubes